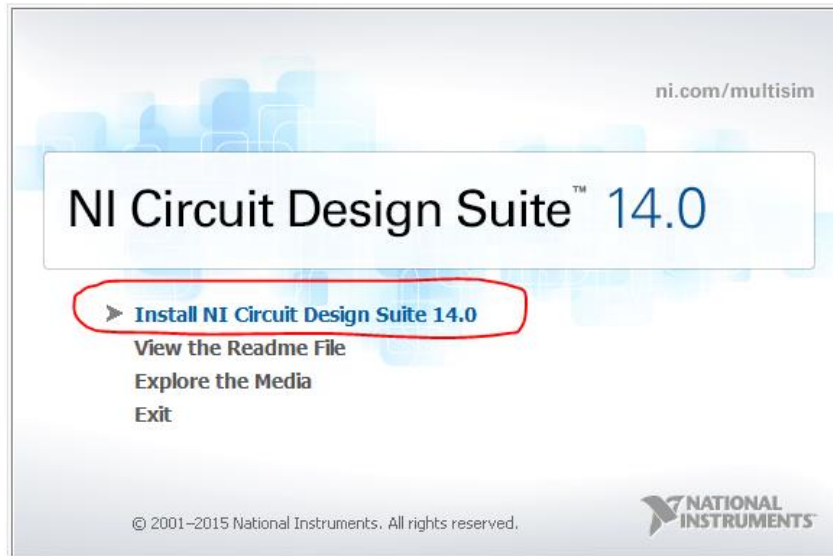
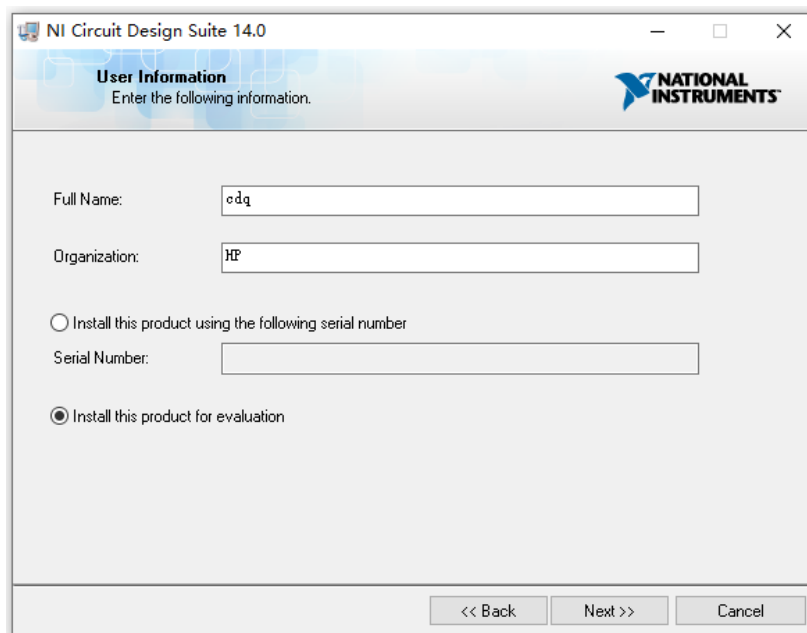


Multisim14.0 安装方法

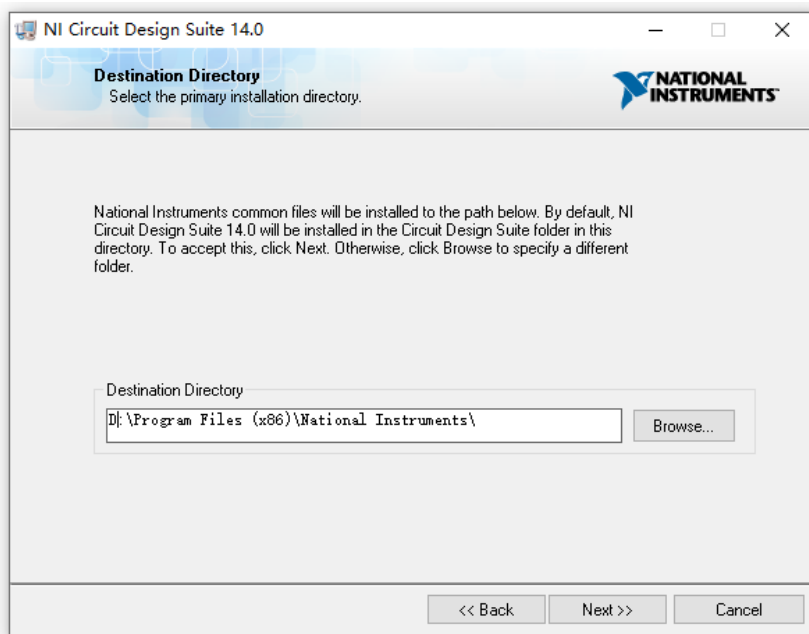
- 1、运行 NI_Circuit_Design_Suite_14_0 安装程序 (NI_Circuit_Design_Suite_14_0_汉化解版)
- 2、选择 Install NI_Circuit_Design_Suite_14_0



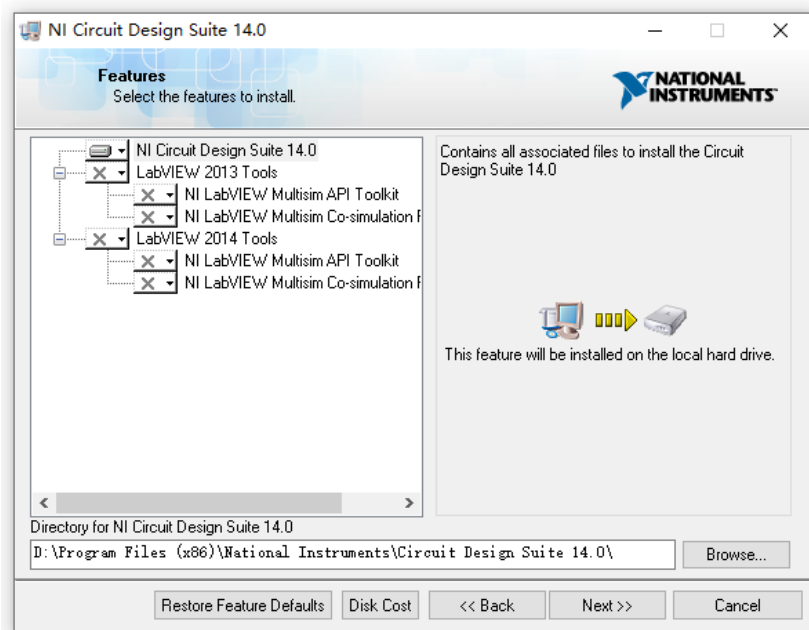
- 3、选择最下方“for evaluation”项，点 NEXT



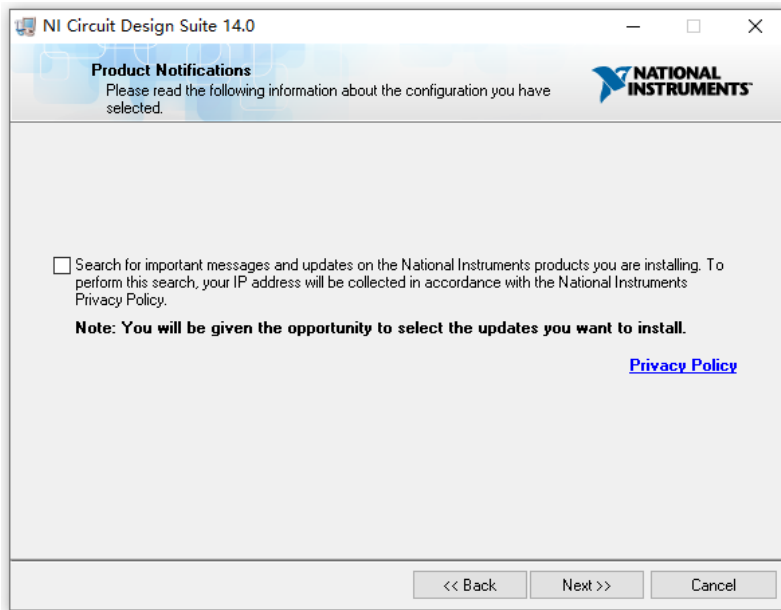
4、选合适路径，点 NEXT



5、点 NEXT



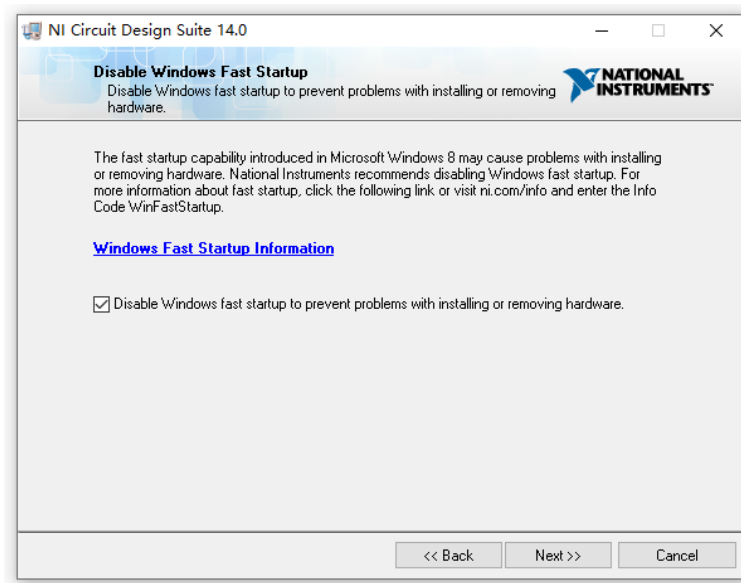
6、不选 SEARCH, 点 NEXT



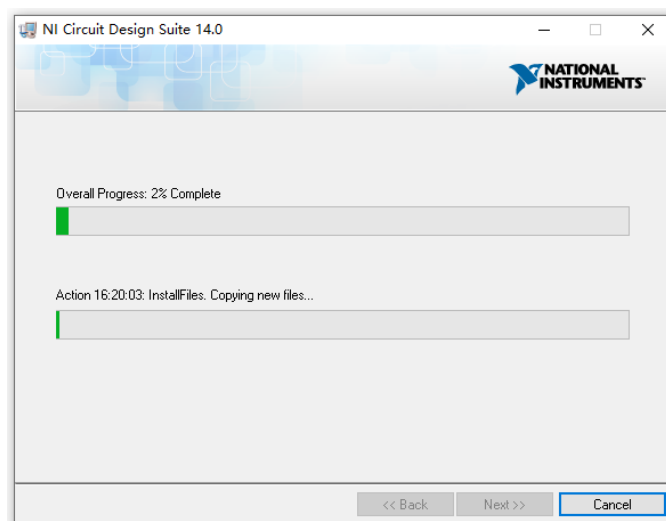
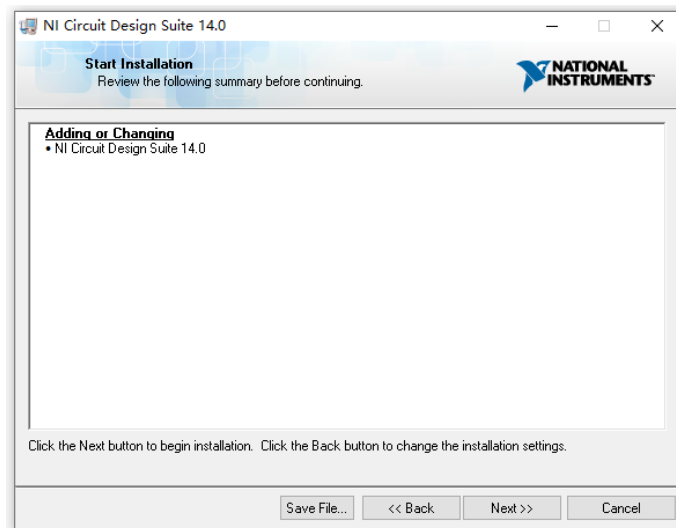
7、选 ACCEPT, 点 NEXT



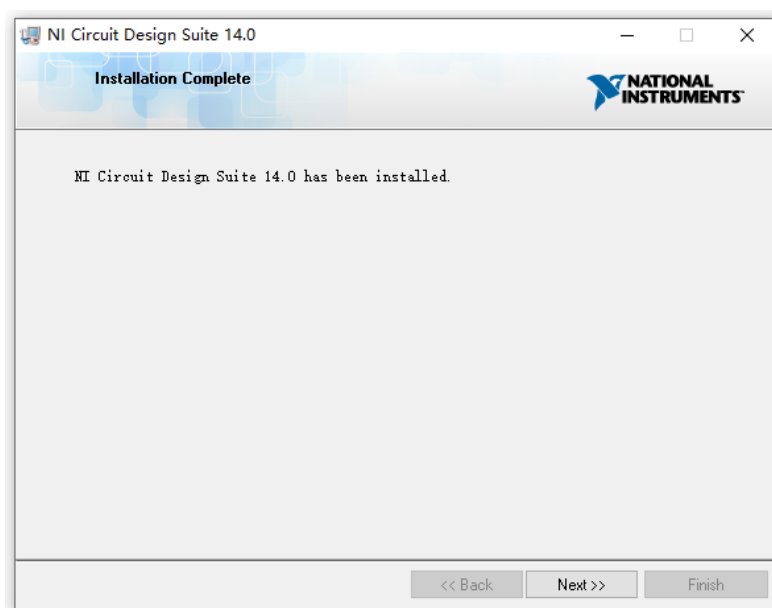
8、选中，点 NEXT



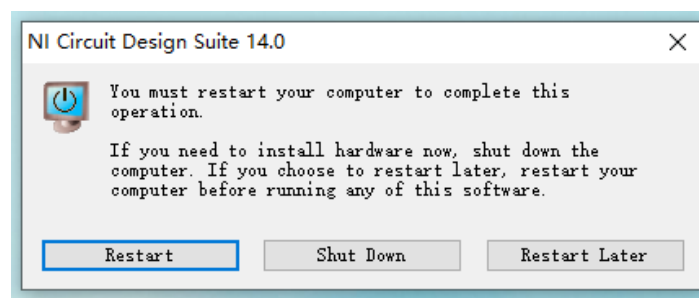
9、点 NEXT



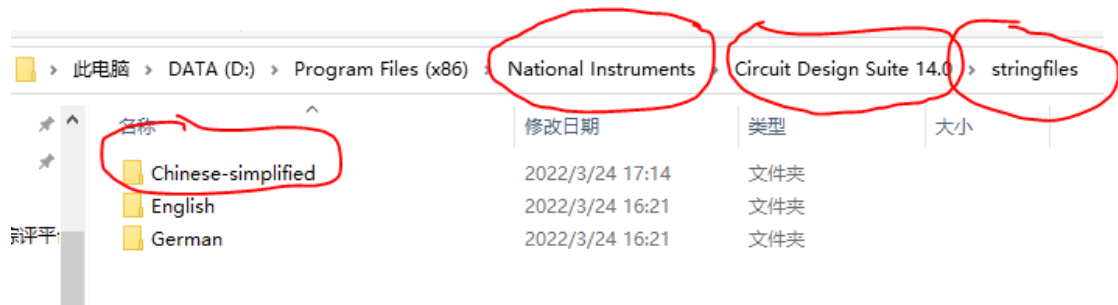
10、如果杀毒软件提示，选允许操作



11、安装成功，重启计算机

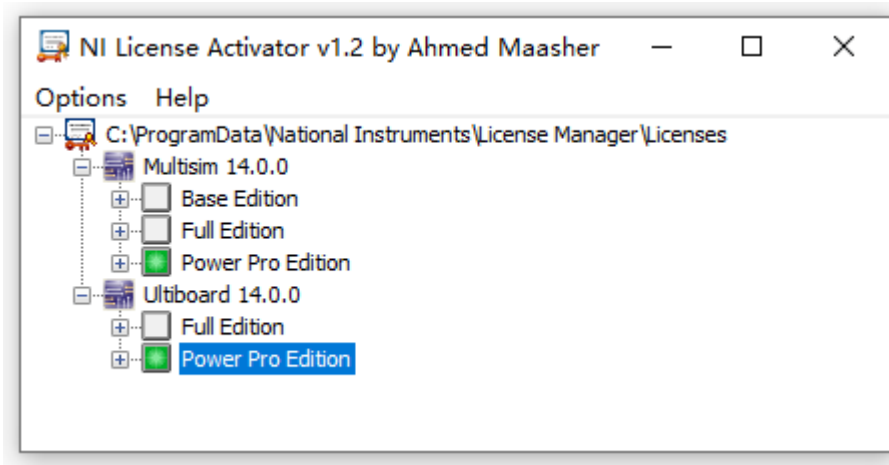


12、将 NI_Circuit_Design_Suite_14_0_汉化破解版文件夹里的 Chinese-simplified 文件夹拷贝到软件安装路径 Circuit Design Suite 14.0 文件夹里的 stringfiles 文件夹里。

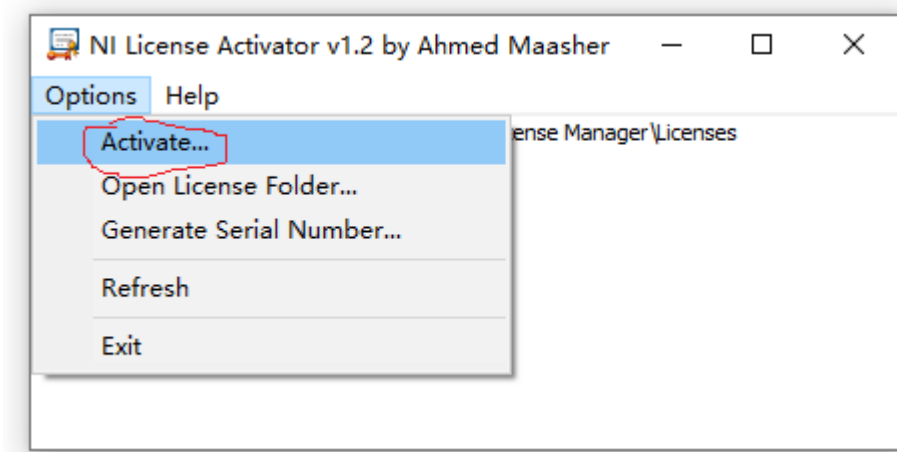


13、进入 NI License Activator 1.2 文件夹，运行 NI License Activator 1.2 程序

14、点击所需版本如 POWER PRO EDITION



15、再进入 OPTIONS 点击 ACTIVATE，POWER PRO EDITION 左侧方框变为绿色，完成。



16、将微信群里提供的数电实验附件中的 2 个 Multisim 附加库文件 (output8bit.llb 和 input8bit.llb) 拷贝到 Multisim14.0 安装路径下的“\instruments”文件夹里